

Jonathan Lu\*, Ashley Jowell\*, Anna Lachenauer\*, Joshua Carter\*, Tanvi Jayaraman\*, Ben Maines\*, Barbara Erny MD, Lisa Patel MD  
Stanford University School of Medicine, Stanford, CA

## Background

- [WHO](#), [Lancet](#): climate change is “greatest threat to global health in the 21st century”
- [AMA \(2019\)](#): teach climate change, health impacts **throughout medical education**
- Few medical schools mention climate change
  - **UCSF**: grants to integrate longitudinally & cross-professionally, piloted in respiratory
  - **U.Illinois**: standardized patient encounters



## Intermediate Results

- Pilot in Cardio, Pulm, Clinical Practice
- Slides, Clinical Cases, Test Questions

**SH:** “She currently lives alone.” → “She currently lives alone. She complains of stuffiness in her house. She has not been able to install an air conditioning unit.”



- Preclinical Faculty Presentation, starts in Women’s Health, Psychiatry
- Lesson: Be Rigorous with Evidence
  - Spurious Correlation of Extreme Heat and Congenital Heart Disease

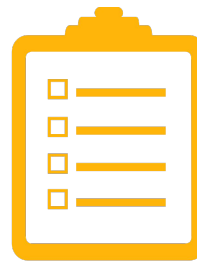
## Methods



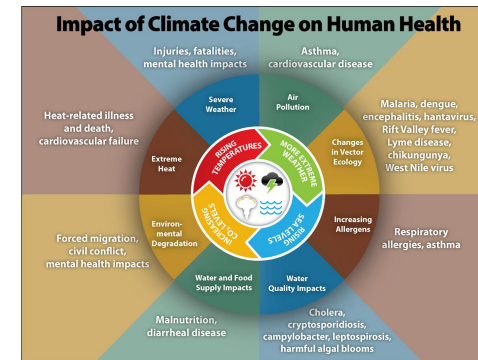
Current State Assessment



Positive Advocacy



Pre-Post Evaluation



“we observed no significant relationships between maternal EHE exposure and CHDs in most regions during summer” - [Lin 2019](#)



Resource Gathering



Iteration with Faculty on Intervention



Integration into Institution, Incentives

## Next Steps

- Evaluate Cardio, Pulm Pilot & Long-Term Retention
- Clerkship Integration
- Social Justice, Health Equity Curricular Reform